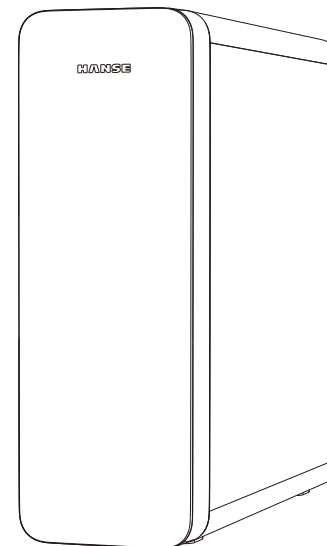


# HANSE

型号：HANSE-RO1200DZ



## 使用手册

生产商:Dauqi GmbH  
在华责任单位:瀚莎热力科技有限公司  
服务热线:☎ 400-828-1958

尊敬的用户：

感谢您选择、使用本产品。

我们承诺：

本产品是一款设计精良、高品质的净水产品, 为了方便您的使用, 请仔细阅读说明书, 并按照本使用说明书的介绍进行操作。自始至终, 我公司都 将为您提供最优质的服务。由于本产品的不断改进, 您所得到的产品可能会与说明书中的图标不完全一致, 谨此致歉。

# 目录

使用注意事项	1-2
注意事项.....	1
装箱清单.....	2
产品简介	3-5
产品型号及主要参数.....	3
产品部件名称.....	3
工作原理图.....	4
电气原理图.....	4
产品特点.....	5
产品功能.....	5
安装及维护	6-12
安装方法.....	6
维护保养.....	10
常见故障处理.....	12
保修证	13
保修证使用说明.....	13
售后服务三包凭证 .....	13
产品中有害物质的名称及含量	14
产品保修说明	15
水效说明	16

使用前请仔细阅读本说明书  
请妥善保存本说明书以备使用  
产品外观、颜色或表面图案以实物为准  
我们的产品在不断更新, 若有变更恕不另行通知

使用注意事项




注意事项


注：本项目所有内容均与安全有关，请用户务必遵守。

本项目中的注意事项只是为了正确地使用本产品。

注意事项中解释了危险、危害的程度大小及可能发生的故事。

- 1.请勿使用未经厂商许可的其他配件，若因此造成机器故障，保修将自动终止。
- 2.请在拆除包装后检查产品是否有损伤，核对配件是否齐全。
- 3.儿童及无行为能力人请在监护人监督下使用本产品。
- 4.倘若发生故障，应立即拔掉电源插头，关闭自来水进水阀门，切勿将有缺陷的产品置于工作状态。
- 5.本产品应在本司授权的维修中心维修，在非授权的维修中心维修时，易引发其他不安全因素。
- 6.反渗透RO膜的过滤产水流量会受水质、水压和水温的影响。当水质不符合标准、水压过低、水温小于25℃时，其产水流量将小于标准值。
- 7.使用随器具附带的新软管组件，旧软管组件不能重复利用。
- 8.以上条款解释权在法律允许下归本公司所有。

	凡是带有该标志的内容，是必须禁止的行为，否则可能会造成产品的损坏或危及使用者的人身安全。
	凡是带有该标志的内容，必须严格按照要求操作，否则可能会造成产品的损坏或危及使用者的人身安全。
	凡是带有该标志的内容，是使用者必须引起重视的部分，否则会因操作不当引起产品损伤或造成其他损失。

 禁止		
	避免阳光及户外 避免安装在阳光直射及户外的场所	
		防冻 请勿将产品储存或暴露在0℃以下的环境中
		
		受热 禁止在机体附近存放易燃易爆或受热易变形变质物品

使用注意事项

 警示		
	故障处理 机器出现故障时，请迅速切断水源、电源	
		避免小孩接触 请勿让小孩操作
		
		紧急呼叫 寻求帮助请呼叫当地销售服务中心
 注意		
	维护 请勿自行拆卸机器上的零部件，以防机器漏水和受损	
		温度 请在4℃~40℃干燥场所使用
		
		停用 超过24小时不使用净水机，请关闭其水源、电源
	配件和滤芯 为保持机器正常运转，请务必使用带本公司防伪标贴的配件和滤芯	
		正确的维修服务 本公司指定的经过专业培训持证上岗人员方可维修此机

装箱清单

净水机	×1
三通球阀	×1
水龙头组件	×1
二分PE管	×1
三分PE管	×1
电源适配器	×1
说明书	×1
配件包	×1
RO反渗透膜滤芯	×1
PCR复合滤芯	×1

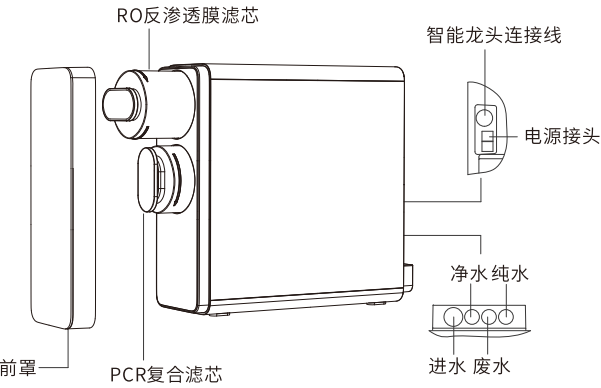
产品简介

产品型号及主要参数

产品名称	HANSE牌HANSE-RO1200DZ型净水机
产品型号	HANSE-RO1200DZ
额定电压	36V ---
额定功率	150W
进水压力	0.1MPa-0.4MPa
纯水流量	3.0L/min
净水流量	2.0L/min
纯水额定总净水量	6000L
净水额定总净水量	6000L
适用环境	环境温度4℃-40℃, 相对湿度≤90% (室内)
适用水质	市政自来水
产品尺寸	460mmx135mmx393mm
出水水质	纯水符合《生活饮用水水质处理器卫生安全与功能评价规范--反渗透处理装置》(2001)的要求; 净水符合《生活饮用水水质处理器卫生安全与功能评价规范--一般水质处理器》(2001)的要求;
执行标准	GB 5749-2022 GB 34914-2021

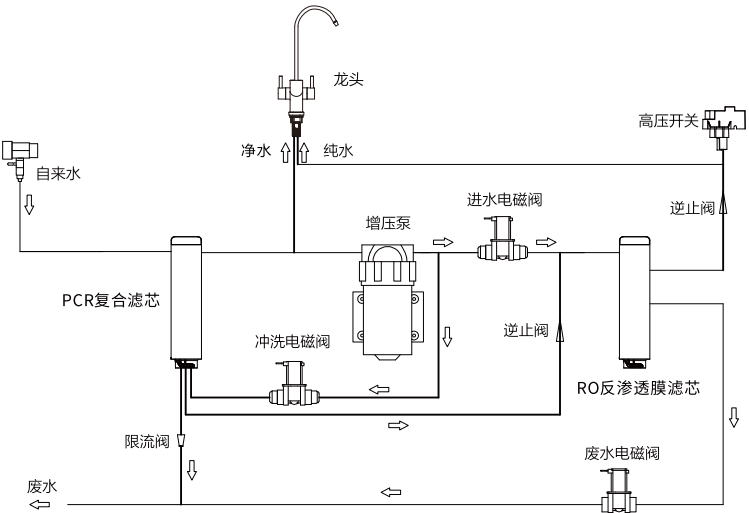
产品部件名称

注意:说明书中的产品、用户界面等插图均为示意图,仅供参考。由于产品的更新和升级,产品实物与示意图略有差异,请以收到实物为准。

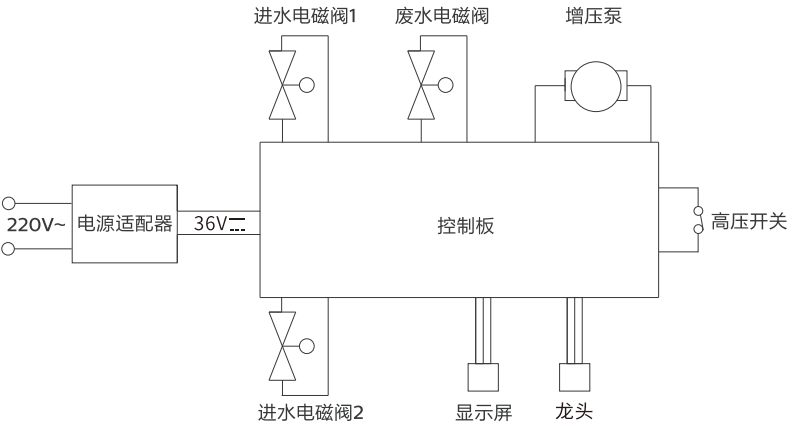


产品简介

工作原理图



电气原理图



## 产品简介

### 产品特点

- 纯、净双过滤系统,清洗,饮用均可安心。
- 纯水经反渗透过滤系统净化所得,建议用于日常饮用。
- 净水经微滤过滤系统净化所得,建议用于日常蔬果清洗。
- 水质监测,智能监测饮用水水质状态,确保过滤性能。

### 产品功能

第一级:PCR复合滤芯:孔径为5微米的PP滤芯有效过滤吸附悬浮物、泥沙、管道铁锈、红虫、胶体等物质。

第二级:RO反渗透膜滤芯:高分子反渗透技术,过滤精度为0.0001微米,滤除水中的细菌、重金属、水垢等物质。

## 安装及维护

### 安装方法

产品的安装使用与调试:

用户购买净水器后,应请专业安装人员对产品进行安装与调试,安装之前请确认

包装箱内的随机附件是否完整。

#### 1、安装的环境要求

1.1本产品增压设计,可安装在有市政自来水管路接口。

1.2应有220V~电源插座。

1.3产品安装场地干净卫生,周围无污染,无阳光直接照射;周围无易燃易爆和电气设备,不受雨淋。

注意:使用钻孔工具时请注意人身安全,并且钻孔位置不能有隐蔽的水、电、气管线。

#### 2、电器线路的安装

2.1必须由专业的人员持证上岗安装。

2.2安装所需的工具和材料:万用表、试电笔、电线、绝缘胶布线管(槽)、插座板等。

2.3关闭电源总闸,按照用户的要求细心安装,操作过程中应该按照电气安装操作规程进行规范操作。

2.4改装完毕后,检查电路和清理现场。

#### 3、出水口快速接头的安装连接

产品的出水口都已有快速接头端口,快速接头是一种不需要工具,就能实现快速牢固连接的接头端口,首先拔出Ω型固定卡环,将端口表面可活动的塑料圈压向端口,使之与端口相贴,就可轻易拔去喇叭型塑料柱塞或PE管,将PE管插入接头端口到底,再向外轻拉一下,使端口表面活动的塑料圈与端口留出一小缝隙,把Ω型固定卡环插入缝隙即可。

出水口快速接头需要拆除PE管时,首先拔出Ω型固定卡环,将端口表面活动的塑料圈拨向端口,使之与端口相贴,就可轻易拔去PE管。

· PE管线与接头拆分与连接。

连接时,取下Ω型固定卡环,将配备的PE管口剪平,插入接头底部后稍微用力外拉一下,确保PE管插入接头密封圈内,再将Ω型固定卡环装入。

## 安装及维护



拆分时,取下Ω型固定卡环,突出部分推抵接头后,按住突出部分拔出PE管线。

注意不能硬拔PE管线。

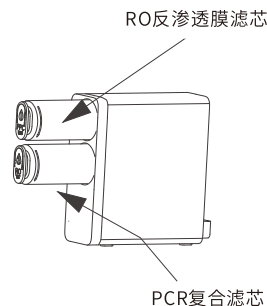


### 4. 滤芯的安装

4.1安装滤芯:从产品包装箱内取出滤芯,去除外包装塑封膜。

4.2本产品滤芯和滤瓶集成一体,横向插入到水路板中,顺时针旋转滤瓶。

4.3按照图示顺序,将滤芯依次装入中框。



### 5. 橱柜式安装:

直接将机器放置在橱柜内合适的位置上,主机放置平稳。

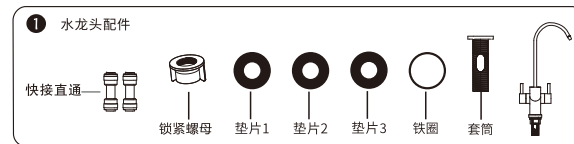
### 6. 管路的安装方法:

6.1安装进水三通球阀:打扫清理安装区域,关闭进水总阀门,拆卸水管龙头(水龙头或角阀等),再连接进水三通球阀(注意:螺纹的连接应加密封用生料带或密封圈),最后接回原水龙头或角阀。

6.2连接进水口:将PE管一端连接在自来水进水球阀上,另一端连接在主机进水口。

6.3安装水龙头:根据水龙头的安装位置,用铁锤和钢钉在不锈钢洗手槽上打一个凹槽(便于钻孔),用电钻在槽面上钻一个 $\phi 29\text{mm}$ 的圆孔,然后固定好龙头。

## 安装及维护



6.4连接净水口:将2分快接直通连接到水龙头标有“净水”的端口,裁剪适当长度的2分PE管,一端插入2分快接直通,另一端与主机“净水”口连接。

6.5连接纯水口:将2分快接直通连接到水龙头标有“纯水”的端口,裁剪适当长度的2分PE管,一端插入2分快接直通,另一端与主机“纯水”口连接。

6.6连接废水口:取一段适宜长度的2分PE管线与主机的“废水”口接口连接,另一端接入排水管道,并固定好PE管,防止脱落出来(注意:废水水管不可单独放置在没有满水保护措施容器中,防止容器中水满导致地板浸泡)。

6.7冲洗滤芯:冲洗之前需将各滤芯安装在整机上。

前置滤芯冲洗:整机连接完成后,打开龙头“净水”端,连通水源,冲洗前置滤芯,建议冲洗30分钟以上,直到出水清澈,然后关闭水龙头。

反渗透膜滤芯冲洗:打开龙头“纯水”端(确保龙头“净水”端关闭),插上电源,机器运行10分钟后关闭龙头2分钟,检查整机是否漏水等问题,若无问题打开龙头,重复上述动作3遍,将反渗透膜上的保湿液冲洗干净。

注:由于反渗透膜内含有保湿液(主要是食品级甘油),为保证出水水质的卫生安全,安装或更换滤芯后第一天尽可能使用机器,产水不建议饮用,可用于厨房清洗用水。若无法按照上述操作,建议先制水20分钟,停机3小时,制水20分钟为1个循环,重复以上循环7次即可。

注意:

①制水完成后如断开电源,机器将停止制水,如净水机水龙头不出水,请检查机器是否接通电源。

②净水机“纯水”可直接用来生饮。

③在产品使用前必须按照上述第6.7条进行滤芯冲洗。

使用说明:

①首次使用,打开龙头,打开进水球阀,净水机进水,待龙头有水流出时,立即关闭龙头,保压30分钟确定管路是否漏水,若无漏水情况发生,打开龙头放水,即可正常使用。

②正常使用时,打开龙头放水即可。

③长时间没有使用机器,正常使用前应放水一定时间。

## 安装及维护

### 运行方式:

每次通电,所有显示亮一下,同时蜂鸣器“滴”叫一声,然后进入冲洗状态,按键操作有效蜂鸣器均鸣叫一声。

普通模式:关水不置换。

置换模式(出厂默认):关水进行置换。

#### 1. 冲洗:

1) 每次通电,自动冲洗18秒。

2) 短按“Flush”键,自动冲洗30秒,冲洗过程中再次短按“Flush”键,关闭冲洗。

3) 累计制水5分钟,关水后冲洗6秒(置换模式下无此功能)。

4) 龙头关水时,强制冲洗3秒。

5) 待机24小时,冲洗18秒。

#### 2. 制水:

检测到高压开关接通,开始制水(滤芯寿命正常时,制水指示灯白色长亮)。

#### 3. 待机:

检测到高压开关断开,进入待机状态。

进入置换状态时如有制水需求时,进入制水,退出置换。

置换模式下,机器冲洗6秒后,设备停10秒,置换4分钟。

待机屏幕保护:待机1分钟,主机显示屏及龙头显示屏进入休眠状态,所有灯熄灭。任意操作点亮屏幕;“滴”叫一声,然后进入冲洗状态,按键操作有效蜂鸣器均“滴”叫一声;

4. 长按“Reset”3秒,进入滤芯复位选择状态,再短按“Reset”按键,循环选择滤芯,被选中的滤芯指示灯闪烁(其余灭),再长按“Reset”按键3秒,则滤芯寿命复位(同时退出滤芯复位状态),10秒不进行操作,自动退出滤芯复位功能。

#### 5. 连续制水保护:

连续制水超过30分钟,机器进入检修状态:进水电磁阀、废水电磁阀、增压泵均停止工作,指示灯全屏闪烁,排除故障后需断电重新上电才能恢复正常工作。

#### 6. 智能屏显龙头

◎滤芯寿命正常时,智能屏显龙头对应滤芯指示灯白色长亮;

◎滤芯寿命预警时,智能屏显龙头对应滤芯指示灯红色闪烁;

◎滤芯寿命到期时,智能屏显龙头对应滤芯指示灯红色长亮;

◎任意滤芯寿命到期时,均能正常制水;

◆屏显龙头取水时,显示纯水TDS值;

◆无任何操作1分钟,龙头显示屏熄灭,任意操作制水、冲洗、按键时,屏幕亮起;

## 安装及维护

### 7. 置换功能:

长按“Flush”+“Reset”键3秒,蜂鸣一声,关闭置换功能。

长按“Flush”+“Reset”键3秒,蜂鸣三声,开启置换功能。

## 维护保养

(1) 滤芯更换周期(建议滤芯更换周期如下):

滤芯	滤芯名称	建议使用周期
PCR	PP棉炭棒反渗透膜复合滤芯	3-12个月
RO	聚磷酸盐 反渗透膜滤芯	24-36个月

(2) 滤芯寿命显示:

任一级滤芯寿命正常时,滤芯对应指示灯亮白色;

任一级滤芯寿命预警时,滤芯对应指示灯橙色闪烁;

任一级滤芯寿命到期时,滤芯对应指示灯橙色长亮;

首次报警10声,一秒一声,然后每次泵启动制水时均报警10声,一秒一声。

任一级滤芯寿命到期后,机器仍能正常制水。

滤芯的更换周期完全依靠用户的水源水质及使用纯净水的用量的变化而定,若采用安全的更换频率,能保证反渗透净水机的正常运行和所产纯净水的水质,因此,以上建议更换滤芯的周期仅供参考。

注意:

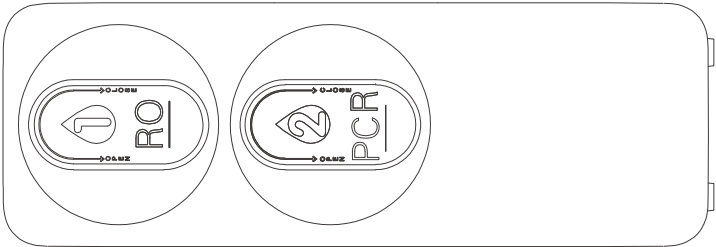
① 在装设高位水箱于楼顶的地区,因水箱往往疏于清洗,导致污泥沉淀物多,此种状态下必须多注意第一道滤芯的更换。

② 溶解性总固体(TDS)上升:表示制水品质下降,RO膜是否该更换。

(2)滤芯更换步骤

请根据滤芯寿命提示或建议更换周期定期更换滤芯,更换滤芯应由本公司专业人员来完成。

- 1.关闭净水机电源、进水三通球阀,并打开龙头放水,直至没有水流出为止。
- 2.把盖板取下,妥善放置,本产品滤芯和滤瓶集成一体,拆卸时,逆时针旋转滤瓶,就可以拆下滤芯组件,反之就可以安装上滤芯组件。 如下图所示:



逆时针拆卸滤瓶,反之安装

- 3.装完滤芯后,打开进水三通球阀,再接通电源,进行复位操作(具体参考说明书第9页“运行方式”第4条。

注意:

- ①更换滤芯时请注意接管顺序,安装时请确保接头不漏水。
- ②滤芯寿命根据使用地域、水质、季节及使用量不同,实际更换周期会有所不同。

■清洁保养

- ◆产品清洁保养时,请不要使用肥皂、洗涤剂、稀释剂、汽油、酒精等强挥发性溶剂,否则可能造成裂纹,划伤和变色。
- ◆请勿直接洒水清洗机器。
- ◆在装设高位水箱于楼顶的地区,因水箱往往疏于清洗,导致污泥沉淀物多,此种状态下必须多注意第一道滤芯的更换。

常见故障处理

故障现象	可能原因	解决对策
机器不出水 产水量变小	PE管打折	理顺PE管
	进水三通球阀是否关闭	打开进水三通球阀
	自来水是否停水	等待自来水供水
	滤芯是否堵塞	更换滤芯
	水压是否小于额定压力	增加增压设备
	原水水温是否太低	无
机器不运行	电源故障	检查是否有电
	电源适配器失效	更换电源适配器
	机器处于缺水状态	检查水源是否有水,确认有水后断电重新开启
味道异常	是否长时间停用机器	将机器的滤芯(除RO膜)各冲洗5分钟,若不能改善,请更换滤芯。
	水源水质差	确认水源为市政自来水
	是否长时间没有换滤芯	更换滤芯
运行过程中 有异常噪音	电源电压是否正常	通知维修员现场调整或更换
	原水流量是否足够	原水容器内增加水量
	变压器是否渗进水	通知维修员现场调整或更换
	增压泵有故障	通知维修员现场调整或更换



保修证

保修证使用说明

尊敬的用户：

感谢您使用本产品，我们将按照《中华人民共和国消费者权益保护法》和国家技术监督局有关规定，

凭此保修证及效购机发票为您提供下列服务：

- 本产品是经过严格的质量管理以及检验过程的产品。
- 将保修证书妥善保管，作为您享受保修服务的凭据。
- 如果您需要详细信息或有任何问题，请浏览我们的网站，也可以与 服务中心联系，或与当地的 门店联系。
- 如果使用过程中净水机出现故障无法排除时，请按以下方法联系维修：

保修期内：请与我公司售后服务中心或特约维修点联系，持保修证书及有效购机发票维修净水机。

超过保修期：请与我公司售后服务中心或特约维修点联系维修，按规定进行收费。

注：请勿自行拆机维修，应由专业人士或维修中心维修，否则易发生危险。

售后服务三包凭证

用户信息	用户姓名		联系电话			
	家庭住址					
产品信息	产品名称		机身编号			
	产品型号					
销售信息	销售单位		购买日期			
	发票号码					
产品维修记录	送修时间	故障现象	更换配件	维修单位	交还日期	服务人员签字
退换货记录	退换货原因	退换货时间	退换货执行	盖章签字		
备注：根据国家三包规定，三包凭证与购机发票作为产品包修、保修与退换货的依据，请妥善保管。						

有害物质声明

■ 产品中有害物质的名称及含量

产品中有害物质的名称及含量表						
部件名称	有害物质					
	铅(Pb)	汞(Hg)	镉(Cd)	六价铬(Cr(VI))	多溴联苯(PBB)	多溴二苯醚(PBDE)
电控板组件	×	○	○	○	○	○
面板及其组件	○	○	○	○	○	○
后盖及其组件	○	○	○	○	○	○
电源线及转接线	○	○	○	○	○	○
包装印刷组件	○	○	○	○	○	○
水龙头	○	○	○	○	○	○
进水电磁阀	○	○	○	○	○	○
冲洗电磁阀	○	○	○	○	○	○
<p>本表格依据SJ/T11364的规定编制。</p> <p>○：表示该有害物质在该部件所有均质材料中的含量在GB/T26572规定的限量要求以下。</p> <p>×：表示该有害物质至少在该部件的某一均质材料中的含量超出GB/T26575规定的限量要求。</p> <p>*明细表中的部件为不同型号产品所包含的主要部件的汇总，本产品是否包含该部件，以产品的实际配置为准。</p> <p>*明细表中未列明的其它部件及其均质材料均不含有害物质。</p> <p>*明细表中标记“×”部件，皆因行业技术发展水平限制而无法实现有害物质的替代。</p> <p>温馨提示：</p> <p>为了保护环境，本产品或其中的部件报废后，作为消费者的您有责任将其与生活垃圾分开，送至有资质的回收站点，由回收处理站点按照国家相关规定进行分类拆解、回收再利用等。有关本产品的回收处理的详细信息，请咨询当地政府、废品处理机构等。</p>						



在中华人民共和国境内销售的电子信息产品必须标识此标志。  
圆圈内的数字表示正常使用状态下产品的环保使用期限。

## 产品保修说明

- 1. 本公司保修卡随每台产品附带, 由用户妥善保管, 连同购机发票作为该产品包修、保修凭证。
- 2. 产品包修政策  
本产品, 自购买之日起(以发票购买日期为准), 整机包修2年;  
厂方、商业单位出售的降价处理商品包修条件同上, 因有瑕疵明示实施降价的, 瑕疵部位不予包修;  
包修期内, 用户送修时必须持有送修产品有效的购买发票和厂方指定的保修凭证, 三包有效期自发票开具之日算起, 用户应妥善保管保修凭证和购机发票,  
送修时必须同时出示保修凭证和购机发票. 用户遗失购买发票的, 应按出厂日期推算三包有效期。  
不包含在保修范围内的零部件 (如: 滤芯)。
- 3. 产品保修政策  
消费者因未按说明书要求操作、使用、维护、保管和自行拆动、非承担三包服务修理者拆动造成损坏;  
无包修凭证与有效购机发票; 超过承诺在包有效期限; 三包凭证型号与修理产品型号不符或者三包凭证涂改; 因不可抗力造成损坏; 由于产品使用环境、条件, 如电源、温度等非本公司所能控制的因素造成一切损坏、损失等。上述情况不属于包修范围, 本公司承诺以优惠价格给予检修。  
包修期满或包修范围以外, 本公司承诺以优惠给予检修。
- 4. 产品退换货政策  
自售出之日起7日内, 发生使用性能故障, 可以选择退货、换货、修理;  
自售出之日起15日内, 发生使用性能故障, 可以选择换货、修复;  
性能故障: 指产品失去应当具备的基本使用功能, 但不包括产品外观瑕疵及其他辅助使用功能的故障。
- 5. 产品服务网络  
本公司设有完善的售后服务网络, 在全国各大城市设有服务中心,
- 6. 顾客来函, 请用正楷字体书写清楚顾客姓名、地址、联系电话, 以免耽误时间。
- 7. 请顾客认真填写保修卡各项内容 以保证您的合法权益。
- 8. 保修卡已使用完, 用户可来信将姓名、地址、联系电话、产品型号、机身编码、购买日期等事项通知本公司或特许服务商, 可补发新保修卡。

## 水效说明

### 有关净水机水效的说明

- 1、有关本产品的水效等级信息, 请参考机身“中国水效标识”中的参数内容。
- 2、净水机水效等级说明

对于净水机中的纯水, 依据国标GB34914-2021《净水机水效限定值及水效等级》, 水效等级分为3级, 其中1级水效最高。

各等级净水机的净水产水率和标称的额定总净水量应符合下表的规定。

净水机水效等级指标值

水效等级	1级	2级	3级
净水产水率/%	≥65	≥55	≥45
额定总净水量/L	≥4000	≥3000	≥2000

Dear users:

Thanks for choosing and using this product.

We promise:

This product is a well-designed and high-quality water purifier. For your convenience, please read the instruction manual carefully and follow the introduction of this instruction manual. From beginning to end, our company will provide you with the best service. Due to the continuous improvement of this product, the product may not be completely consistent with picture in the manual.

## Contents

Precautions for use	1-2
Procautions .....	1
Packing list .....	2
Product introduction	3-5
Model and specification .....	3
Part name .....	3
Working schematic diagram .....	4
Electric schematic diagram .....	4
Product features .....	5
Product functions .....	5
Installation and maintenance	5-12
Installation .....	5
Maintenance .....	10
Troubleshooting .....	12
Warranty card	13
Instructions for warranty card .....	13
After service three-guarantee certificate .....	13
The name and the content of the hazardous substance	14
Products warranty instruction	15
Description of water efficiency	16

Please read this manual carefully before use.

please keep this manual properly for use.

The appearance ,color and surface pattern of the products shall prevail.

Our products are constantly updated and are subject to change without notice.

## Precautions for use

### Precautions

Note:

All contents is related to safety, please be sure to follow strictly.

The precautions are only for the correct use of this products.

The precautions explain the degree of the danger and the possible accidents.

1,do not use other accessories without the permission of the manufacturer.

Otherwise the warranty will automatically terminate.

2,please check whether the products is damaged and the accessories are complete after opening package.

3,children and incapacitated person are only be permitted to use this products under the supervision of their guardians.

4,If malfunctions appears,please cut off the power,close the inlet water valve immediately,do not keep the machine in working mode.

5,This machine shall be repaired by authorized repair shop and skilled personnel only.

6,the capacity of the pure water through RO membrane will be affected by the feed water quality,presure and temperature. The capacity will be less than standard value if the water quality could not meet the standard,the water pressure is too low and the water temperature is less than 25 °C.

7,please use the new hose components attached to the appliance. The old hose components cannot be reused.

8,the right to interpret the above terms belongs to our company as permitted by law.

	any contents with this sign must be prohibited, otherwise it may cause damage to the product or endanger the safety of users.
	any contents with this sign must be strictly required to operate,otherwise it may cause damage to the product or endanger the safety of users.
	any contents with this sign must be paid attention to by the users, otherwise it may cause damage to the product or other losses due to improper operation.

Prohibited		
	Avoid direct sunlight	
	Do not place in conditions below 0°C	
		Do not place near flammables and explosives

## Precautions for use

Warning		
	When malfunctions occur immediately cut off power and water supply	
	Keep away from children	
	Call service centre for help	
Attention		
	Do not disassemble the machine without guidance of professional personnel to avoid machine leakage or damage	
	Please use the machine in condition of 4-40°C	
	Please cut off the water source and power supply if not using for over 24 hours	
	Only use the accessories and cartridge from original manufacturer to make sure the machine work well	
	Only professional personnel can repair and maintain the machine	

## Packing list

Water purifier	×1
Inlet water Tvalve	×1
Faucet	×1
1/4"PE Pipe	×1
3/8"PE Pipe	×1
Adapter	×1
Instruction manual	×1
Accessories bag	×1
RO cartridge	×1
PCR composite cartridge	×1

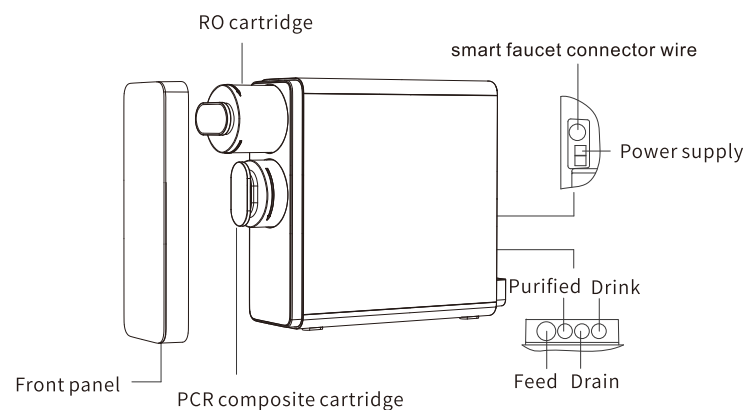
## Product introduction

### Model and specification

Product	HANSE BRAND HANSE-RO1200DZ Water Purifier
Model	HANSE-RO1200DZ
Rated Voltage	36V ---
Rated Power	150W
Water Pressure	0.1MPa-0.4MPa
Drinking Water Rate	3.0L/min
Purified Water Rate	2.0L/min
Rated capacity of drinking water	6000L
Rated capacity of purified water	6000L
Applicable conditions	Ambient Temperature 4°C-40°C, relative humidity below 90%(indoor)
Water Source	Municipal Water
Product Size	460mmx135mmx393mm
Water quality	Pure water complies with the Hygiene, Safety and Functional Evaluation Specification for Drinking Water Quality Processors - Reverse OsmosisThe requirements of "Processing Equipment" (2001); Purified water meets the hygiene, safety, and functional evaluation standards for domestic drinking water quality processors - General waterThe requirements of "Quality Processor" (2001);
Standard	GB 5749-2022 GB 34914-2021

### Part name

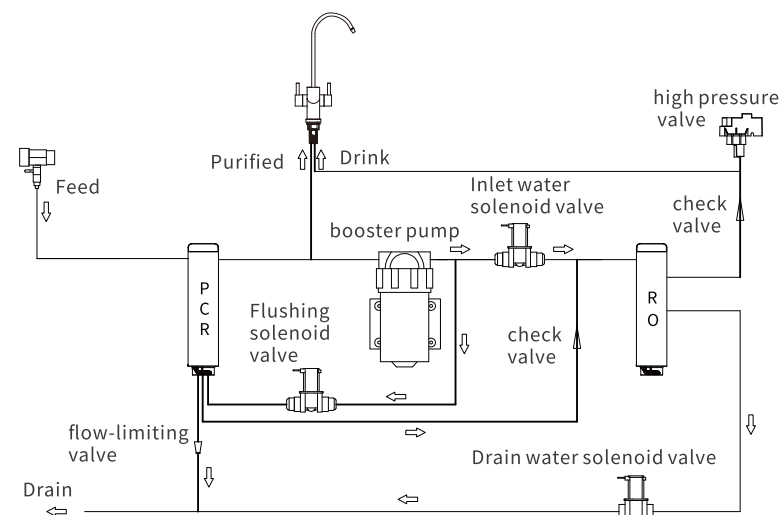
Note:the pictures of the manual are for reference only.please refer to the actual products received.



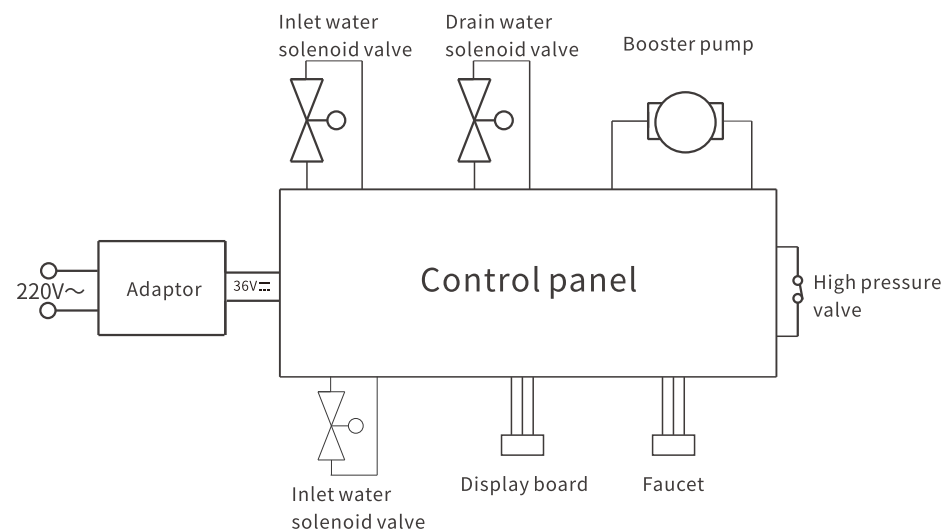
3

## Product introduction

### Working schematic diagram



### Electric schematic diagram



4

## Product introduction

### Product features

- double filtration system for purified water and drinking water.
- Drinking water is purified by RO cartridge for drinking daily.
- Purified water is purified by micro filtration for washing fruits and vegetables.
- Smart monitoring of drinking water quality to ensure filtration performance.

### Product functions

Layer 1:PCR composite cartridge:PCR cartridge with an aperture of 5 microns effectively filters and adsorbs suspended solids,sediment,rust,red worms, colloids and other substances

Layer 2:RO cartridge: with filtration accuracy of 0.0001 microns,the RO cartridge can filter bacteria,heavy metals,scale and other substance.

## Installation and maintenance

### Installation

The product shall be installed by authorized and skilled personnel only. Please check all accessories before installation.

#### 1. Requirements of installation conditions

1.1 the product is equipped with a booster pump and shall be stalled with municipal water.

1.2 there should be 220v power socket.

## Installation and maintenance

1.3 Make sure the installation place is clean and not in the proximity of direct sunlight, high humidity, flammables,explosives or unsafe electrical equipment. Attention:Please pay attention to the safety when drilling and make sure there is no hidden water pipe,electric wire and gas tube.

#### 2. Installation of electric circuits.

2.1 the product must be installed by the professional personnel with the license.

2.2 Tools and materials required for installation:multimeter , electric pens, wires, insulated tape,socket etc.

2.3 Turn off the main power gate and follow the users' requirements and the electric installation operation procedures.

2.4 check the circuit and clean up the sites after installation.

#### 3. Installation of Quick Connector

3.1 Quick connector ports are adopted on the inlet and outlet of the machine.

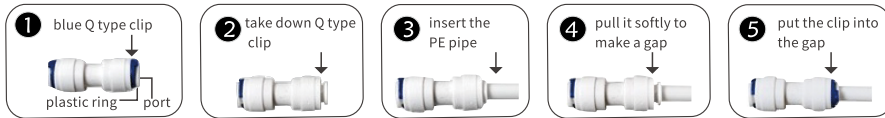
Quick connector is a port which can connect quickly and firmly without any tools.Firstly,pull out the Q type clip on the port,push the movable plastic ring to the port,make it attaching to the port to move the plastic plunge or PE pipe.

Insert the PE pipe to the end of the port,then pull slightly to make a gap between the movable plastic ring and the port.Finally insert the Q type clip in the gap. When taking the PE pipe from quick connector,first pull out the Q type clip,push the movable plastic ring to the port to make it attaching the port,then could pull out the PE pipe.

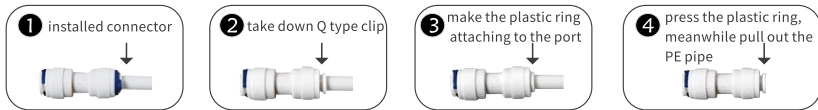
#### 3.2 divide and Connect of PE pipe and quick connector

Connect:Take down Q type clip,cut the PE pipe to a smooth end face and insert into the quick connector,then pull slightly to check PE pipe has been in the o ring seal of quick connector,finally insert the clip.

## Installation and maintenance



Divide: Take down Q type clip, make the plastic ring attaching to the port, pull out the PE pipe.

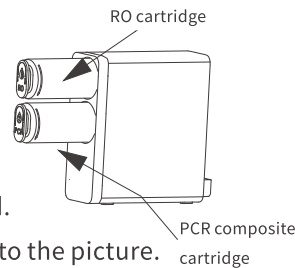


### 4. Cartridge installation

4.1 take out the cartridge from the carton and remove the outer plastic packing.

4.2 put the cartridge into the hole of the product, spin clockwise to connect with the waterway board.

4.3 install the cartridge into the product according to the picture.



### 5. cabinet installation

Place the product on a flat and stable surface in the cabinet.

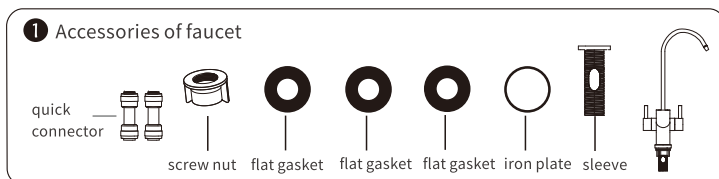
### 6. installation of water inlet and outlet

6.1 installation of inlet water T valve: clean the installation area, close the inlet water valve, take apart the faucet or angle valve, then connect the inlet water T valve. Finally connect to the original faucet or angle valve.

(attention: connection of screw thread should be sealed with tape or O ring to avoid leakage.)

6.2 connection of inlet water port: connect one side of PE pipe to the inlet water valve, and another side to the inlet water port on the product.

6.3 installation of faucet: according to the required place of faucet, drill a  $\varnothing 29\text{mm}$  hole on the stainless steel sink, then fix the faucet.



## Installation and maintenance

6.4 connection of purified water port: connect the 1/4" fitting to one side of faucet, cut the 1/4" PE pipe to a suitable length, one side insert to the quick connector and the other side connect to the port of purified water on the product.

6.5 connection of drinking water port: connect the 1/4" fitting to one side of faucet, cut the 1/4" PE pipe to a suitable length, one side insert to the quick connector and the other side connect to the port of drinking water on the product.

6.6 connection of drain water port: take a suitable length of 1/4" PE pipe to connect with the port of drain water on the product. And connect another side to the drain line and fix the PE pipe to avoid drop. (note: the drain water pipe should not place separately in a container without full water protection to prevent water leakage and floor soaking).

6.7 flush the cartridge: the cartridges should be installed in the product before flushing. PPC composite cartridge: after the products installed, turn on the purified water faucet to flush the PPC composite for 30 minutes until the water is clean. then turn off the purified water faucet.

RO cartridge: turn on the drinking water faucet, plug in the power and run the product for 10 minutes, then turn off the faucet for 2 minutes, check the product water leakage or not. repeat the above actions 3 times.

Note: because the RO membrane contains moisturizing liquid (mainly food grade glycerin), in order to ensure the hygiene and safety of the water quality, please use the product as much as possible on the first day after installing or replace the RO cartridge. And the water is not recommended to drink but for washing.

Note:

1, if the power supply is disconnected after the water purified, the product will stop purifying water. if there is no water from faucet, please check the product connect the power supply or not.

2, the drinking water can be used for drinking.

3, the cartridges should be flushed before use according to article 6.7 above.

Instructions for use:

1, for the first time, turn on the faucet and water inlet ball valve. after water flowing from the faucet, turn off the faucet for 30 minutes to check water leakage. If there is no water leakage, turn on the faucet to drain water, and it can be used normally.

2, when using normally, just turn on the faucet to get water.

3, if you haven't use the product for a long time, you should turn on the faucet for a certain period before drinking.



## Installation and maintenance

### Operation mode:

each time power on, all the indicator will be on for 3 seconds and the buzzer beep once into the flush state. The buzzer will beep once for each effective push button operation.

Normal mode: turn off the water valve and do not replace the cartridge.

Replace mode(factory default): turn off the water valve and replace the cartridge.

### 1.flushing

1.1 automatically flushing for 18 seconds when each time power on.

1.2 Automatically flushing for 30 seconds when short press flush button.

Stop flushing when press flush button again during the flushing process.

1.3 Automatically flushing 6 seconds after Cumulatively purifying water for 5 minutes.(the function is not available under the replace mode)

1.4 Automatically flushing 3 seconds after the faucet turned off.

1.5Automatically Flushing for 18 seconds after standing by for 24 hours.

### 2.purifying

The product start to purify water after the high pressure valve turning on.

### 3.stand by

The product will turn to stand by state after the high pressure valve turning off. in replace mode, the machine will stop for 10 seconds after flushing for 6 seconds and replace for 4 minutes.

Standby screen protection:after 1 minutes of standby,the machine display screen and the faucet display screen enter into a hibernation state and all the indicators will be turned off.light up the screen with any operation and enter into flushing state after peep once.the buzzer will beep once for each effective push button operation.

### 4.reset

Long press reset button for 3 seconds to enter into selecting state, short press reset button, then select the cartridge, the selected cartridge indicator will be on,again long press reset button for 3 seconds,the cartridge reset is completed and exit reset function. Exiting reset function without operation for 10 seconds.

### 5.continuously purifying protection

The product will enter into maintenance state after purifying for 30 minutes. the inlet water solenoid valve,drain water solenoid valve and the booster pump will all stop working.all the indicator will be on during the maintenance state. The power needs to be cut off after troubleshooting. The product return to normal work after power on.

## Installation and maintenance

### 6.smart faucet

The filter cartridge in normal state: the indicator will turn white.

The filter cartridge will be expired soon:the indicator will flash in red.

The filter cartridge has been expired:the indicator will turn red.

When the lifespan of any filter element expires, it can produce water normally;

When the screen display faucet takes water, it displays the TDS value of pure water; If there is no operation for 1 minute, the display screen of the faucet will turn off, and the screen will light up when water making, rinsing, or pressing buttons are operated arbitrarily;

### 7.replacement function:

Long press “flush” and “reset” for 3 seconds and peep once to turn off the replacement function.

Long press” flush” and “reset” for 3 seconds and peep three times to turn on the replacement function.

## Maintenance

### 1.cartridge replacement period:

Types of cartridge	PCR composite cartridge	RO cartridge
Frequency of replacement	3-12months	24-36months

### 2.cartridge life display:

The Indicator turn white for life normal.

The indicator flash in orange for life warning.

The indicator be on in orange for life expired.

Warning first time beep 10 times, one beep in one second.

Then beep 10 times every time when the bump start to work, one beep in one second.

The product can work normally when any cartridge is expired.

The replacement frequency of the cartridge depends entirely on the water quality and amount of purified water.

### Note:

1.please pay more attention to the replacement of PPC cartridge for the area where have the water tank on the roof.because the water tank is often neglected to clean,resulting in a lot of sludge sediment .

2.TDS increased reminds the water quality declined and RO cartridge should be replaced.

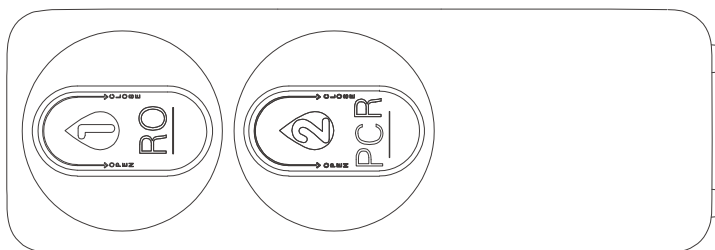


## Installation and maintenance

### Steps to replace the cartridge

Please replace the cartridge regularly according to the indicator suggestion. The replacement of the cartridge should be completed by the company's professionals.

- 1.turn off the power and inlet water T ball valve, turn on the faucet to release water until there is no water outflow.
- 2.remove the front panel and rotate the cartridge counterclockwise , then pull out the cartridge.Rotate the cartridge clockwise to assemble it.



Remove the cartridge counterclockwise and assemble the cartridge clockwise.

- 3.after replacing the cartridge,turn on the inlet water T ball valve and turn on the power and do reset operation.(please refer artical 4 of operation mode on page 9 of the manual for details.)

### Note:

- 1.please pay attention to the operation sequence to avoid water leakage.
- 2.the life of cartridge will be different according to city, water quality, season, and usage amount.

### Cleaning and maintenance:

- 1.please do not use soap,detergent,thinner,gasoline,alcohol and other strong volatile solvents,otherwise it may cause cracks,scratches and discoloration.
- 2.do not washing the machine directly by water.
- 3.please pay more attention to the replacement of PPC cartridge for the area where have the water tank on the roof.because the water tank is often neglected to clean,resulting in a lot of sludge sediment .

## Installation and maintenance

### Product features

Common Malfunction	Possible Reason	Solutions
Very little or no water flow	PE pipe is bent	Straighten pipe
	inlet water T valve is closed	Open the inlet water T valve
	Source water is shut down	Wait for the water source supply
	PP+C cartridge is blocked	Replace the cartridge
	Water pressure is low	Add pressure boost treatment
	Feed water temperature is lower than required	no
Machine does not work	Electricity fault	Check power supply
	Adaptor loses efficiency	Replace the adaptor
	Machine short of water	Check feed water. If feed water is OK, reconnect power supply
Water Taste is abnormal	Not using for long time	Flush the cartridge for 5 minutes, if not solve the problem,please replace cartridges
	Poor feed water quality	Use the municipal water
	Not replace the cartridges for long time	Replace the cartridges
Noises during machine operation	Power and voltage do not match	Call professional personnel to check and repair
	Feed water flow too little	increase feed water flow rate
	Adaptor is damaged	Call professional personnel to check and repair
	Failure caused on water pump	Call professional personnel to check and repair

## Warranty card

### Instructions for warranty card

Dear user:

Thanks for using this product, we will provide you with the following service in accordance with the “consumer protection law of the People’s Republic of China” and the relevant provisions of the state technical supervision bureau, with this warranty card and valid purchase invoice.

This product has undergone strict quality management and inspection process. Keep the warranty card as your proof of warranty service.

If you need more information or have any questions, please visit our website, contact our service center or contact your local store.

If the product has the malfunction and you could not get good solution, please contact the repair center according to the following methods: During the warranty period: please contact the after service center or special repair shop with warranty card and valid purchase invoice to repair the water purifier.

Beyond the warranty period: please contact the after service center or special repair shop to repair the water purifier and pay as the relevant regulations.

Note: please do not disassemble and repair the product by yourself. It should be repaired by professionals, otherwise it is prone to danger.

### After service three-guarantee certificate

User's information	Name		contact number			
	Address					
Product information	Product		Body code			
	Model					
Sales information	Sales unit		Date of purchase			
	Invoice number					
Repair record	Repair date	malfunction	Replace part	Repair unit	Return date	Signature
Return, exchange record	Reason		Date		Execute	
Note: according to national three-guarantee regulations, this after service three-guarantee certificate and purchase invoice are used as the basis for product repair, return and exchange. please keep them properly.						

## Declaration of hazardous substance

### The name and the content of the hazardous substance

The name and the content of the hazardous substance						
Part name	Hazardous substance					
	Pb	Hg	Cd	Cr(VI)	PBB	PDDE
PCB	×	○	○	○	○	○
Front panel	○	○	○	○	○	○
rear cover	○	○	○	○	○	○
Power cord and wire	○	○	○	○	○	○
package	○	○	○	○	○	○
faucet	○	○	○	○	○	○
inlet water solenoid valve	○	○	○	○	○	○
drain water solenoid valve	○	○	○	○	○	○

According to SJ/T 11364.

○: Indicates that the substance in the material composition is below the high limits of the current requirements in GB/T 26572.

×: Indicates that at least one of the homogeneous substance in the material composition is below the high limits of the current requirements in GB/T 26572.

All the electronic products sold in the People's Republic of China must identify this mark. The figure in the circle indicates the environmental protection period of the product under normal use.



Electronic information products sold within the territory of the People's Republic of China must bear this logo. The numbers inside the circle indicate the environmental protection period of the product under normal use.

## Product warranty instructions

1. Our company 's warranty card comes with each product and should be kept properly by the user. Together with the purchase invoice, it serves as the product' s warranty and warranty certificate.

### 2 Product warranty policy

This product is guaranteed to be repaired for two year from the date of purchase (based on the date of purchase of the invoice); the repair conditions for reduced-price products sold by the manufacturer and commercial units are the same as above. If a price reduction is expressly implemented due to defects, the defective parts will not be repaired. During the warranty period, when sending the product for repair, the user must have a valid purchase invoice and the warranty card specified by the manufacturer. The validity period of the three guarantees is calculated from the date of the invoice. The user should properly keep the warranty card and purchase invoice. When sending the machine for repair, the warranty card and the purchase invoice must be presented at the same time. If the user loses the purchase invoice, the validity period of the three guarantees should be calculated based on the factory date. Parts not covered by the warranty (e.g. cartridge).

### 3. Product warranty policy

Damage caused by consumers failing to operate, use, maintain, keep, and disassemble by themselves in accordance with the instructions, or being disassembled by repairers who are not responsible for the three-guarantee service, without warranty card and valid purchase invoices, and exceeding the promised warranty period, the three-guarantee The certificate model does not match the model of the repaired product or the three-guarantee certificate is altered: damage caused by force majeure, all damage and loss caused by factors beyond the company's control such as product use environment and conditions, such as power supply, temperature, etc. The above situation does not fall within the scope of the warranty, and our company promises to provide maintenance at a preferential price. When the warranty period expires or the warranty scope is exceeded, our company promises to provide maintenance at a discount.

### 4.Product return and exchange policy

If the malfunction occurs within 7 days from the date of sale, you can choose to return, exchange or repair it. If the malfunction occurs within 15 days from the date of sale, you can choose to exchange or repair it;

malfunction: refers to the loss of the basic functions that the product should have, but does not include defects in the appearance of the product and failures in other auxiliary functions.

### 5. Product service network

The company has a complete after-sales service network and has service centers in major cities across the country.

6. When receiving letters from customers, please write clearly the customer's name, address, and contact number in block letters to avoid delaying time.

7. Please fill in the warranty card carefully to ensure your legitimate rights and interests.

8. If the warranty card has been used up, the user can send a letter to inform the company or the authorized service provider of the name, address, contact number, product model, body code, purchase date, etc., and a new warranty card can be issued.

## Description of water efficiency

### Instructions on the water efficiency of water purifiers

1. For information on the water efficiency level of this product, please refer to the parameters in the "China Water Efficiency Label" on the product.

### 2. Description of water efficiency grade of water purifier

For the purified water in the water purifier, the water efficiency grade is divided into three levels according to the national standard GB34914-202 "Water Purifier Water Efficiency Limit Value and Water Efficiency Level", among which Level 1 has the highest water efficiency.

The purified water production rate and nominal rated total purified water volume of each grade of water purifier should comply with the provisions of the following table.

Water purifier water efficiency grade index value

Water efficiency level	Level 1	Level 2	Level 3
Purified water production rate/%	≥65	≥55	≥45
Rated total water purification volume/L	≥4000	≥3000	≥2000